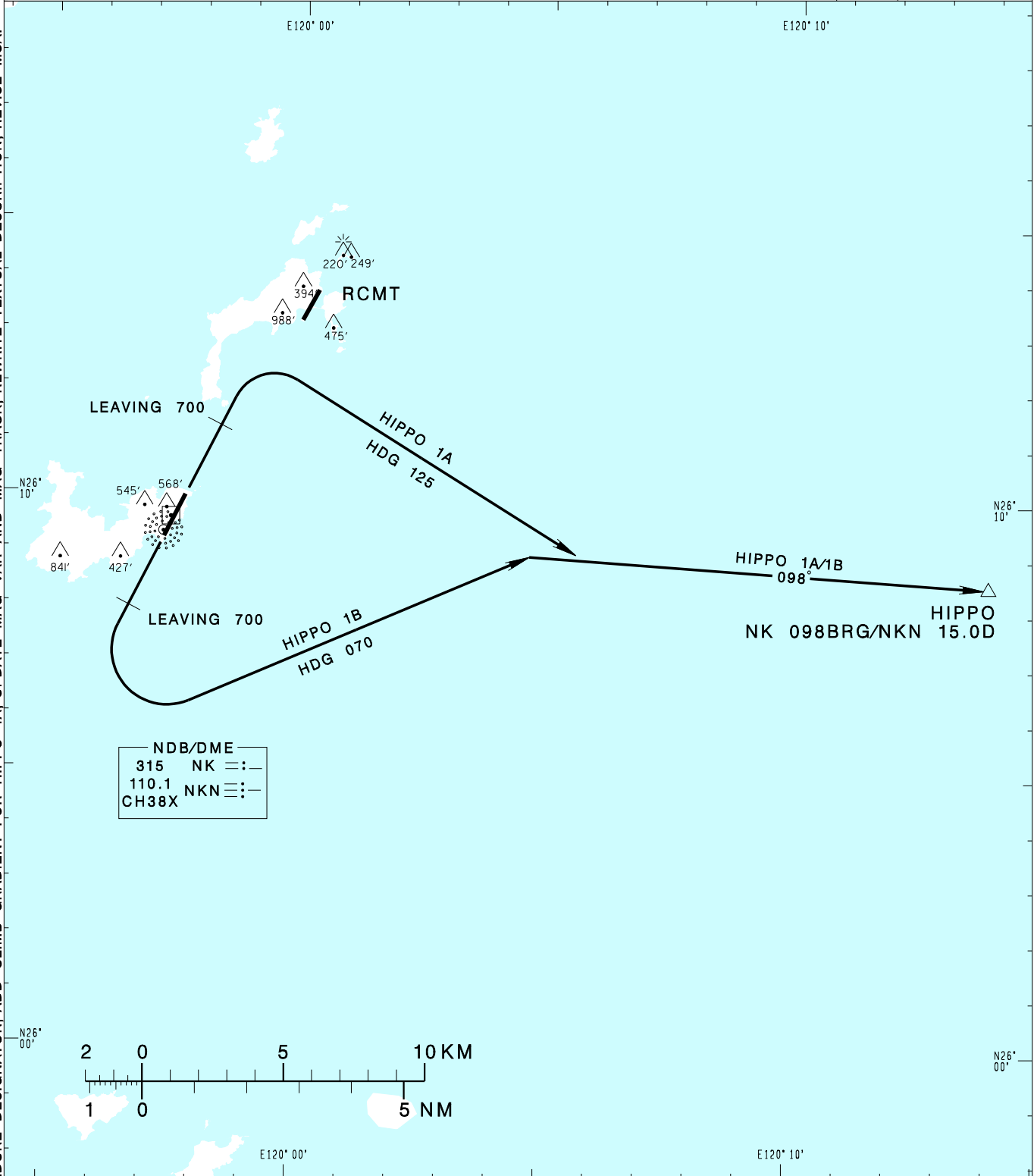


馬祖/南竿機場
MATSUNANGAN AD

RCFG SID
HIPPO 1A(RWY03)
HIPPO 1B(RWY21)

TAIPEI APP 121.0 122.3	NANGAN TWR 118.55	ATIS 127.95	 MSA ARP 25NM
Apt Elev: 232'	Trans Level: FL130	Trans Alt: 11,000'	
BEARINGS ARE MAGNETIC; DISTANCES ARE NAUTICAL MILES; ELEVATIONS, HEIGHTS IN FEET * CAA AUTHORIZATION REQUIRED IN ADVANCE			

CHANGES: PROCEDURE DESIGNATOR; ADD CLIMB GRADIENT FOR HIPPO 1A; UPDATE MAG VAR AND MAG TRACK; REWRITE TEXTUAL DESCRIPTION; REVISE MSA.



HIPPO ONE ALFA DEPARTURE
Climb on RWY HDG until leaving 700ft, then turn right HDG 125 to track NK 098BRG to HIPPO.

HIPPO ONE BRAVO DEPARTURE
Climb on RWY HDG until leaving 700ft, then turn left HDG 070 to track NK 098BRG to HIPPO.

NOTE

- HIPPO 1A: Minimum climb gradient required: 4.0%(244ft/NM) until 1,200ft.
- Takeoff minima: VIS: 3,200m CEIL: 600ft
- CAUTION HIGH TERRAIN NEAR THE AIRPORT.
- For CAT A/B aircraft only.
- ATS Surveillance required.